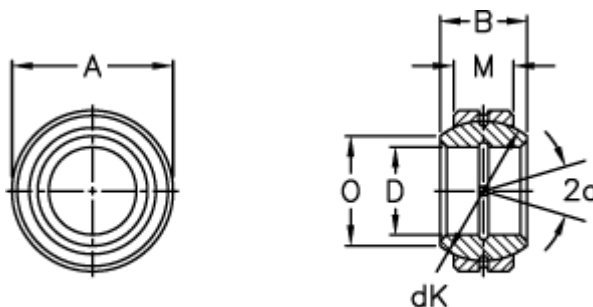


Article number: 03505080

Description: Fluro Rod end GE 80FO

Measures



Str. 6–12 uden smørerille

A = 130 0 -0,018

B = 75

D = 80 0 -0,015

dK = 115

Dynamic load C (kN) = 490

M = 50

O = 87.1

Static load C0 (kN) = 2450

Tilt angle = 14

Weight = 3500